

# High Power Bi-Directional Coupler

## SYBD-10-63HP+

50Ω 10dB Coupling DC Pass 2700 to 6000 MHz



CASE STYLE: JB1233  
PRICE: \$29.95 ea. QTY (1-9)

+ RoHS compliant in accordance with EU Directive (2002/95/EC)

The + suffix has been added in order to identify RoHS Compliance. See our web site for RoHS Compliance methodologies and qualifications.

### Maximum Ratings

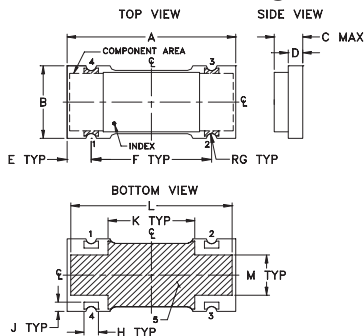
Operating Temperature	-55°C to 100°C
Storage Temperature	-55°C to 100°C
DC Current	2A

Permanent damage may occur if any of these limits are exceeded.

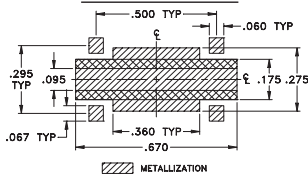
### Pin Connections

INPUT	1
OUTPUT	2
COUPLED (forward)	4
COUPLED (reverse)	3
GROUND	5

### Outline Drawing



### PCB Land Pattern

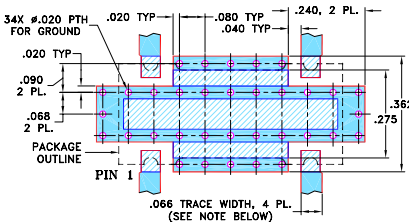


Suggested Layout,  
Tolerance to be within ±0.02

### Outline Dimensions (inch/mm)

A	B	C	D	E	F	G
.70	.32	.13	.060	.100	.500	.022
17.78	8.13	3.30	1.52	2.54	12.70	0.56
H	J	K	L	M		wt
.060	.040	.360	.670	.175		grams
1.52	1.02	9.14	17.02	4.45		0.68

Demo Board MCL P/N: TB-398  
Suggested PCB Layout (PL-260)



NOTES: 1. TRACE WIDTH IS SHOWN FOR ROGERS RO4350B WITH DIELECTRIC THICKNESS .030" ± .002"; COPPER: 1/2 OZ. EACH SIDE. FOR OTHER MATERIALS TRACE WIDTH MAY NEED TO BE MODIFIED.  
2. BOTTOM SIDE OF THE PCB IS CONTINUOUS GROUND PLANE.

- Denotes PCB COPPER LAYOUT WITH SMOBC (SOLDER MASK OVER BARE COPPER)
- Denotes COPPER LAND PATTERN FREE OF SOLDER MASK

### Features

- high power handling, 25 watts typ.
- low mainline loss, 0.45 dB typ.
- excellent VSWR, 1.1:1 typ.
- excellent directivity 23 dB typ.
- wideband frequency, 2700 to 6000 MHz

### Applications

- instrumentation
- ISM
- defense communications
- federal communications
- fixed satellite

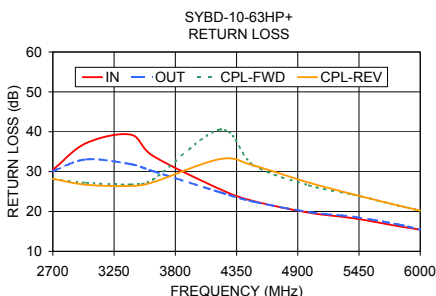
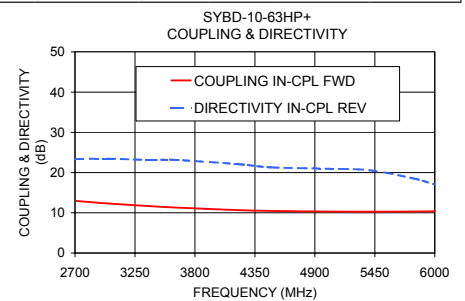
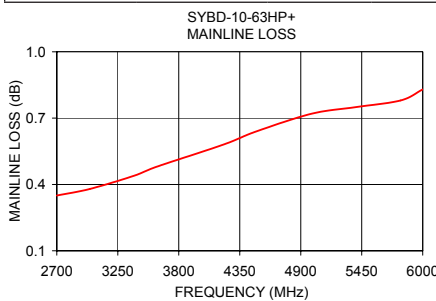
### Bi-Directional Coupler Electrical Specifications

FREQ. (MHz)	COUPLING (dB)		MAINLINE LOSS <sup>1</sup> (dB)		DIRECTIVITY (dB)		VSWR (:1)	POWER INPUT (W)
	Nom.	Flatness	Typ.	Max.	Typ.	Min.		
$f_c - f_u$			Typ.	Max.	Typ.	Min.	Typ.	Max.
2700-6000			0.60	1.2	20	10	1.2	
2700-3000	12.5±0.8	±0.5	0.40	0.8	23	16	1.1	25
3000-3600	11.8±0.8	±0.7	0.45	0.9	23	15	1.1	25
3600-4500	10.8±0.7	±0.6	0.60	1.0	22	12	1.2	20
4500-6000	10.3±0.8	±0.4	0.75	1.2	18	10	1.3	20

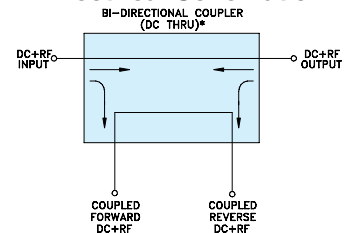
1. Mainline loss includes theoretical power loss at coupled port.

### Typical Performance Data

Frequency (MHz)	Mainline Loss (dB)	Coupling (dB)		Directivity (dB)		Return Loss (dB)			
		In-Out	In-Cpl Fwd	Out-Cpl Rev	Out-Cpl Fwd	In-Cpl Rev	In	Out	Cpl Fwd
2700.00	0.35	12.96	13.00	23.92	23.33	30.45	30.13	28.13	28.18
3000.00	0.38	12.32	12.36	24.54	23.46	37.16	33.07	27.19	26.71
3400.00	0.44	11.63	11.65	23.99	23.10	39.27	31.87	26.78	26.40
3600.00	0.48	11.35	11.35	23.67	23.18	33.94	30.12	28.04	27.32
4200.00	0.58	10.67	10.71	22.27	22.08	25.61	24.84	40.53	33.13
4500.00	0.64	10.47	10.52	21.14	21.30	22.64	22.47	31.66	31.56
5000.00	0.72	10.31	10.36	19.25	20.96	19.70	19.86	26.55	27.23
5400.00	0.75	10.28	10.33	18.12	20.58	18.31	18.68	24.22	24.29
5800.00	0.78	10.31	10.37	17.26	18.56	16.33	16.77	21.49	21.52
6000.00	0.83	10.37	10.44	16.76	17.05	15.43	15.44	20.24	20.22



### Electrical Schematic



\* ELECTRICAL SCHEMATIC IS FOR BI-DIRECTIONAL COUPLER WITHOUT INTERNAL TRANSFORMERS AND RESISTORS.

**Mini-Circuits®**  
ISO 9001 ISO 14001 AS 9100 CERTIFIED

minicircuits.com

P.O. Box 350166, Brooklyn, New York 11235-0003 (718) 934-4500 Fax (718) 332-4661 For detailed performance specs & shopping online see Mini-Circuits web site

The Design Engineers Search Engine Provides ACTUAL Data Instantly From MINI-CIRCUITS At: [www.minicircuits.com](http://www.minicircuits.com)

IF/RF MICROWAVE COMPONENTS

REV. A  
M119986  
ED-12762/1A  
SYBD-10-63HP+  
WZ/QL/AM  
081113