

Surface Mount Frequency Mixer

RMS-11X+ RMS-11X

Level 7 (LO Power + 7dBm) 5 to 1900 MHz



Maximum Ratings

Operating Temperature	-40°C to 85°C
Storage Temperature	-55°C to 100°C
RF Power	200mW
IF Current	40mA

Pin Connections

LO	1
RF	5
IF	4
GROUND	2,3,6

Features

- excellent L-R isolation, 35 dB typ.
- conversion loss, 7.1 dB typ.
- small size, 0.25"x0.31"x0.2"

Applications

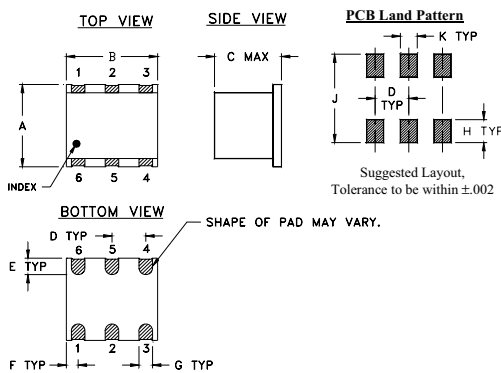
- PCN
- satellite distribution
- GPS

CASE STYLE: TT240
PRICE: \$3.95 ea. QTY (1-9)

+ RoHS compliant in accordance with EU Directive (2002/95/EC)

The +Suffix identifies RoHS Compliance. See our web site for RoHS Compliance methodologies and qualifications.

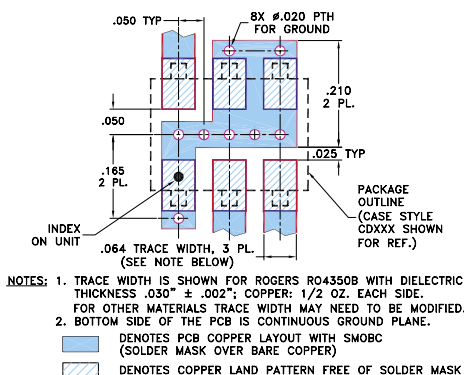
Outline Drawing



Outline Dimensions (inch/mm)

A	B	C	D	E	F	
.250	.31	.20	.100	.050	.055	
6.35	7.87	5.08	2.54	1.27	1.40	
G	H	J	K			wt
.040	.070	.270	.050			grams
1.02	1.78	6.86	1.27			0.50

Demo Board MCL P/N: TB-03
Suggested PCB Layout (PL-052)



Electrical Specifications

FREQUENCY (MHz)	CONVERSION LOSS (dB)	LO-RF ISOLATION (dB)			LO-IF ISOLATION (dB)			IP3 at center band (dBm)										
		L	M	U	L	M	U											
f _L -f _U	\bar{X} σ Max.	Total Range Max.			L	M	U	Typ.										
5-1900	5-1000	7.1	.10	8.2	9.8	58	45	35	20	27	18	56	45	37	20	27	20	10

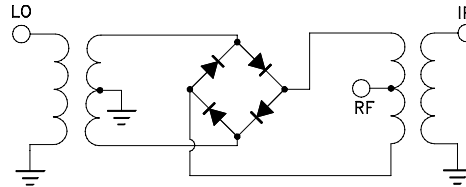
1 dB COMP.: +1 dBm typ.
For phase detection, DC output positive with in-phase RF & LO.

L = low range [f_L to 10 f_L] M = mid range [10 f_L to f_U/2] U = upper range [f_U/2 to f_U]

Typical Performance Data

Frequency (MHz)	Conversion Loss (dB)	Isolation L-R (dB)	Isolation L-I (dB)	VSWR RF Port (:1)	VSWR LO Port (:1)	
						LO +7 dBm
RF	LO	LO +7 dBm	LO +7 dBm	LO +7 dBm	LO +7 dBm	
5.00	35.00	6.69	57.72	66.80	1.21	2.98
10.01	40.01	6.67	57.22	64.98	1.22	2.83
50.04	80.04	6.66	51.74	53.60	1.23	2.78
103.56	73.56	6.72	46.56	47.68	1.23	2.75
189.86	159.86	6.79	42.32	43.39	1.26	2.72
241.95	211.95	6.90	40.60	41.62	1.31	2.59
308.34	278.34	7.00	38.96	39.89	1.32	2.59
392.94	362.94	7.11	37.54	38.49	1.37	2.56
500.75	470.75	7.20	35.72	37.03	1.44	2.60
638.14	608.14	6.65	34.40	36.08	1.52	2.53
720.38	690.38	7.33	33.17	35.36	1.54	2.52
918.04	888.04	7.35	31.46	34.64	1.53	2.61
950.00	920.00	7.26	30.90	34.39	1.54	2.63
1036.36	1006.36	7.24	30.00	34.46	1.52	2.68
1200.00	1170.00	7.58	30.35	34.77	1.40	2.79
1320.71	1290.71	7.59	32.03	34.21	1.34	2.90
1500.00	1470.00	7.67	35.10	33.40	1.26	2.89
1800.00	1770.00	8.36	38.63	32.68	1.42	3.62
1850.00	1820.00	8.56	36.54	32.31	1.47	3.73
1900.00	1870.00	8.80	34.84	32.78	2.04	3.94

Electrical Schematic



Mini-Circuits®
ISO 9001 ISO 14001 CERTIFIED

ALL NEW
minicircuits.com

P.O. Box 350166, Brooklyn, New York 11235-0003 (718) 934-4500 Fax (718) 332-4661 For detailed performance specs & shopping online see Mini-Circuits web site



The Design Engineers Search Engine Provides ACTUAL Data Instantly From MINI-CIRCUITS At: www.minicircuits.com

RF/IF MICROWAVE COMPONENTS

REV. B
M102713
RMS-11X
070425
Page 1 of 2

Performance Charts

