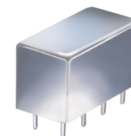


# Plug-In Power Splitter/Combiner

## PSC-3-1+ PSC-3-1

3 Way-0° 50Ω 1 to 200 MHz



CASE STYLE: A01  
PRICE: \$28.20 ea. QTY. (1-9)

+ RoHS compliant in accordance with EU Directive (2002/95/EC)

The +Suffix identifies RoHS Compliance. See our web site for RoHS Compliance methodologies and qualifications.

### Maximum Ratings

Operating Temperature	-55°C to 100°C
Storage Temperature	-55°C to 100°C
Power Input (as a splitter)	1W max.
Internal Dissipation	0.375W max.

### Pin Connections

SUM PORT	6
PORT 1	1
PORT 2	2
PORT 3	5
GROUND	3,4,7,8
CASE GROUND	3,4,7,8

### Features

- low insertion loss, 0.4 dB typ.
- high isolation, 40 dB typ.
- rugged welded construction

### Applications

- VHF
- amateur & FM radio
- federal & defense communications

### Electrical Specifications

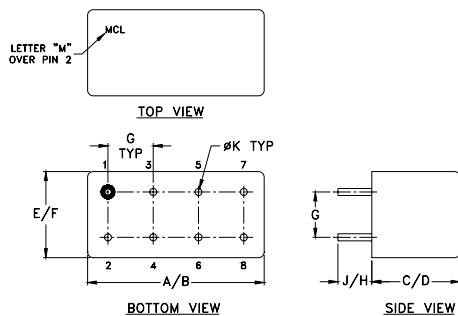
FREQ. RANGE (MHz)	ISOLATION (dB)						INSERTION LOSS (dB) ABOVE 4.8 dB						PHASE UNBALANCE (Degrees)			AMPLITUDE UNBALANCE (dB)		
	L		M		U		L		M		U		L	M	U	L	M	U
	Typ.	Min.	Typ.	Min.	Typ.	Min.	Typ.	Max.	Typ.	Max.	Typ.	Max.	Max.	Max.	Max.	Max.	Max.	Max.
$f_L$ - $f_U$																		
1-200	45	30	40	30	40	25	0.6	1.0	0.4	0.7	0.6	1.0	1.0	2.0	4.0	0.15	0.2	0.3

L = low range [ $f_L$  to 10  $f_L$ ] M = mid range [10  $f_L$  to  $f_U/2$ ] U = upper range [ $f_U/2$  to  $f_U$ ]

### Typical Performance Data

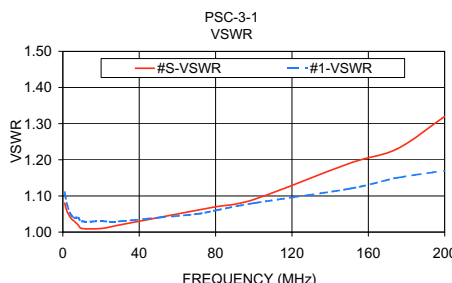
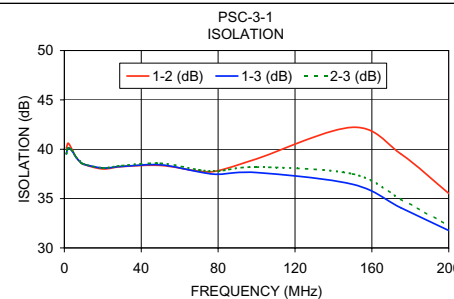
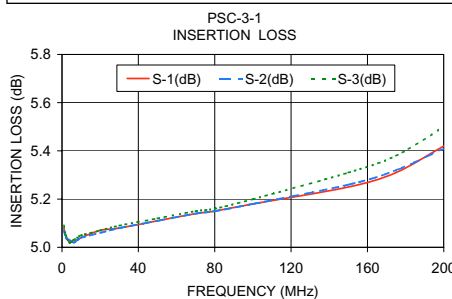
Freq. (MHz)	Insertion Loss (dB)			Amp. Unbal. (dB)	Isolation (dB)			Phase Unbal. (deg.)	VSWR S	VSWR 1	VSWR 2	VSWR 3
	S-1	S-2	S-3		1-2	1-3	2-3					
	1.00	5.08	5.07		5.09	0.02	40.10					
2.00	5.05	5.04	5.05	0.01	40.61	40.13	40.14	0.03	1.06	1.08	1.08	1.08
4.00	5.02	5.03	5.02	0.01	39.99	39.83	39.85	0.04	1.04	1.05	1.05	1.06
6.00	5.03	5.02	5.03	0.01	39.23	39.21	39.22	0.05	1.03	1.04	1.04	1.04
8.00	5.03	5.03	5.04	0.01	38.76	38.77	38.79	0.06	1.02	1.04	1.04	1.04
10.00	5.04	5.04	5.05	0.01	38.47	38.48	38.51	0.07	1.01	1.03	1.03	1.03
20.00	5.07	5.06	5.07	0.01	38.00	38.10	38.11	0.12	1.01	1.03	1.03	1.03
30.00	5.08	5.08	5.09	0.01	38.24	38.26	38.34	0.12	1.02	1.03	1.03	1.03
50.00	5.11	5.11	5.12	0.01	38.36	38.42	38.58	0.29	1.04	1.04	1.04	1.05
70.00	5.14	5.14	5.15	0.01	37.78	37.70	37.91	0.36	1.06	1.05	1.05	1.06
80.00	5.15	5.15	5.16	0.02	37.83	37.46	37.79	0.47	1.07	1.06	1.06	1.07
100.00	5.18	5.18	5.20	0.02	39.02	37.64	38.20	0.51	1.09	1.08	1.08	1.09
150.00	5.25	5.26	5.31	0.06	42.22	36.45	37.50	0.71	1.19	1.12	1.13	1.15
175.00	5.31	5.32	5.38	0.08	39.53	34.07	34.94	0.71	1.23	1.15	1.15	1.18
200.00	5.42	5.41	5.50	0.09	35.52	31.76	32.27	0.76	1.32	1.17	1.19	1.22

### Outline Drawing



### Outline Dimensions (inch/mm)

A	B	C	D	E	F
.770	.800	.385	.400	.370	.400
19.56	20.32	9.78	10.16	9.40	10.16
G	H	J	K	wt	
.200	.20	.14	.031	grams	
5.08	5.08	3.56	0.79	5.2	



### electrical schematic



**Mini-Circuits**  
ISO 9001 ISO 14001 CERTIFIED

ALL NEW  
minicircuits.com

P.O. Box 350166, Brooklyn, New York 11235-0003 (718) 934-4500 Fax (718) 332-4661 For detailed performance specs & shopping online see Mini-Circuits web site



The Design Engineers Search Engine Provides ACTUAL Data Instantly From MINI-CIRCUITS At: [www.minicircuits.com](http://www.minicircuits.com)

REV. A  
M98898  
PSC-3-1  
HY/TD/CP  
070220

RF/IF MICROWAVE COMPONENTS