

Surface Mount

Monolithic Amplifier

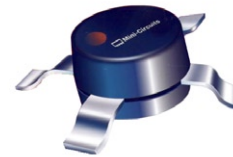
DC-1 GHz

Product Features

- Exact footprint substitute** MAR-8SM and MSA-0886
- High gain, 31.5 dB at 0.1GHz, reduces component count
- High power output, +12.5 dBm typ.
- Low noise
- Improved stability
- Protection against power supply transients
- Aqueous Washable
- Protected by US Patent, 6,943,629

Typical Applications

- Cellular
- PCN instrumentation



MAR-8ASM+

CASE STYLE: WW107
PRICE: \$1.17 ea. QTY. (30)

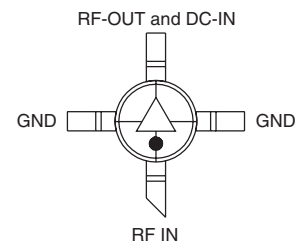
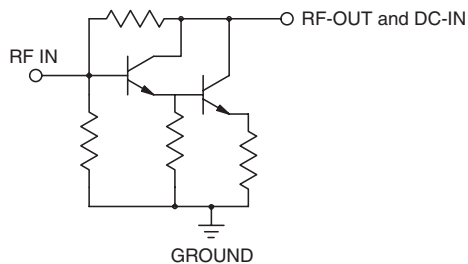
+ RoHS compliant in accordance with EU Directive (2002/95/EC)

The +Suffix has been added in order to identify RoHS Compliance. See our web site for RoHS Compliance methodologies and qualifications.

General Description

MAR-8ASM+ (RoHS compliant) is a wideband amplifier offering high dynamic range. It has repeatable performance from lot to lot. It is enclosed in a Micro-X package. MAR-8ASM+ uses Darlington configuration and is fabricated using InGaP HBT technology. Expected MTBF is 14,000 years at 85°C case temperature.

simplified schematic and pin description



| Function | Pin Number | Description |
|------------------|------------|--|
| RF IN | 1 | RF input pin. This pin requires the use of an external DC blocking capacitor chosen for the frequency of operation. |
| RF-OUT and DC-IN | 3 | RF output and bias pin. DC voltage is present on this pin; therefore a DC blocking capacitor is necessary for proper operation. An RF choke is needed to feed DC bias without loss of RF signal due to the bias connection, as shown in "Recommended Application Circuit". |
| GND | 2,4 | Connections to ground. Use via holes as shown in "Suggested Layout for PCB Design" to reduce ground path inductance for best performance. |

Mini-Circuits
ISO 9001 ISO 14001 AS 9100 CERTIFIED

minicircuits.com

P.O. Box 350166, Brooklyn, New York 11235-0003 (718) 934-4500 Fax (718) 332-4661 For detailed performance specs & shopping online see Mini-Circuits web site



The Design Engineers Search Engine Provides ACTUAL Data Instantly From MINI-CIRCUITS At: www.minicircuits.com

IF/RF MICROWAVE COMPONENTS

REV. E
M120653
MAR-8ASM+
081216
Page 1 of 4

Electrical Specifications at 25°C and 36mA, unless noted

| Parameter | Min. | Typ. | Max. | Units |
|---|----------------------|------------|-------|-------|
| Frequency Range* | DC | | 1 | GHz |
| Gain | f=0.1 GHz f=1 GHz | 31.5 25 | | dB |
| Input Return Loss | f=DC to 1 GHz | | 15.5 | dB |
| Output Return Loss | f=DC to 1 GHz | | 11 | dB |
| Output Power @ 1 dB compression | f=1 GHz | | +12.5 | dBm |
| Output IP3 | f=1 GHz | | +25 | dBm |
| Noise Figure | f=1 GHz | | 3.1 | dB |
| Recommended Device Operating Current | | | 36 | mA |
| Device Operating Voltage | | | 3.7 | V |
| Device Voltage Variation vs. Temperature at 36 mA | | | +1.2 | mV/°C |
| Device Voltage Variation vs. Current at 25°C | | | 11.3 | mV/mA |
| Thermal Resistance, junction-to-case ¹ | | | 140 | °C/W |

*Guaranteed specification DC-1 GHz. Low frequency cut off determined by external coupling capacitors.

Absolute Maximum Ratings

| Parameter | Ratings |
|-----------------------|----------------|
| Operating Temperature | -40°C to 85°C |
| Storage Temperature | -55°C to 100°C |
| Operating Current | 65mA |
| Power Dissipation | 250mW |
| Input Power | 13dBm |

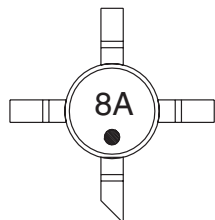
Note: Permanent damage may occur if any of these limits are exceeded.

These ratings are not intended for continuous normal operation.

¹Case is defined as ground leads.

²Full temperature range.

Product Marking



Additional Detailed Technical Information

Additional information is available on our web site. To access this information enter the model number on our web site home page.

Performance data, graphs, s-parameter data set (.zip file)

Case Style: WW107

Plastic micro-x, .085 body diameter, lead finish: tin/silver/nickel

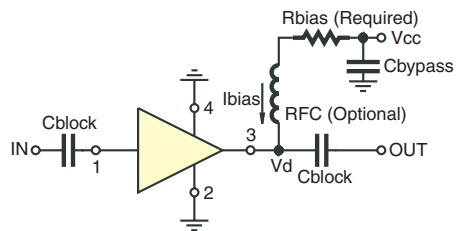
Tape & Reel: F4

Suggested Layout for PCB Design: PL-253

Evaluation Board: TB-411-8A+

Environmental Ratings: ENV08T3

Recommended Application Circuit



Test Board includes case, connectors, and components (in bold) soldered to PCB

| R BIAS | |
|--------|---|
| Vcc | "1%" Res. Values (ohms) for Optimum Biasing |
| 7 | 88.7 |
| 8 | 118 |
| 9 | 143 |
| 10 | 174 |
| 11 | 200 |
| 12 | 226 |
| 13 | 255 |
| 14 | 280 |
| 15 | 309 |

ESD Rating

Human Body Model (HBM): Class 2 (2000 v to < 4000 v) in accordance with ANSI/ESD STM 5.1 - 2001

Machine Model (MM): Class M1 (<100 v) in accordance with ANSI/ESD STM 5.2 - 1999

MSL Rating

Moisture Sensitivity: MSL1 in accordance with IPC/JEDECJ-STD-020C

| No. | Test Required | Condition | Standard | Quantity |
|-----|------------------------------|---|-----------------------------|----------|
| 1 | Visual Inspection | Low Power Microscope Magnification 40x | MIP-IN-0003 (MCT spec) | 45 units |
| 2 | Electrical Test | Room Temperature | SCD (MCL spec) | 45 units |
| 3 | SAM Analysis | Less than 10% growth in term of delamination | J-Std-020C (Jedec Standard) | 45 units |
| 4 | Moisture Sensitivity Level 1 | Bake at 125°C for 24 hours Soak at 85°C/85%RH for 168 hours Reflow 3 cycles at 260°C peak | J-Std-020C (Jedec Standard) | 45 units |

MSL Test Flow Chart

