

Surface Mount Low Pass Filter

LPF-B0R8+

50Ω DC to 0.8 MHz

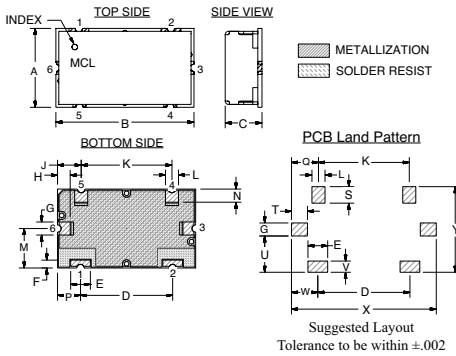
Maximum Ratings

Operating Temperature	-40°C to 85°C
Storage Temperature	-55°C to 100°C
RF Power Input	0.25W Max

Pin Connections

INPUT	1
OUTPUT	2
GROUND	3, 4, 5, 6

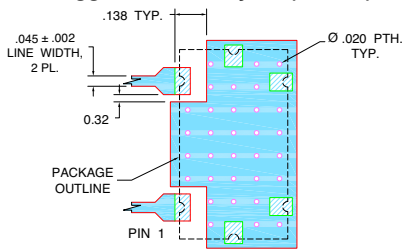
Outline Drawing



Outline Dimensions (inch/mm)

A	B	C	D	E	F	G	H	J	K	L	M
.472	.826	.220	.551	.118	.047	.078	.076	.142	.543	.078	.236
11.99	20.98	5.59	14.00	3.00	1.19	1.98	1.92	3.59	13.79	1.98	5.99
N	P	Q	S	T	U	V	W	X	Y	wt	
.079	.138	.162	.098	.096	.217	.067	.157	.866	.512	grams	
1.99	3.49	4.11	2.49	2.44	5.51	1.70	3.99	22.00	13.00	6	

Demo Board MCL P/N: TB-400+ Suggested PCB Layout (PL-247)



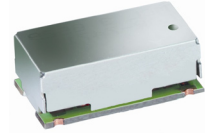
- NOTES:
- TRACE WIDTH IS SHOWN FOR FR4 WITH DIELECTRIC THICKNESS .025" ± .002". COPPER: 1/2 OZ. EACH SIDE. FOR OTHER MATERIALS TRACE WIDTH MAY NEED TO BE MODIFIED.
 - BOTTOM SIDE OF THE PCB IS CONTINUOUS GROUND PLANE.
- DENOTES PCB COPPER LAYOUT WITH SMOBC (SOLDER MASK OVER BARE COPPER)
 - DENOTES COPPER LAND PATTERN FREE OF SOLDER MASK

Features

- High rejection
- Good VSWR, 1.1:1 Typ @ Passband
- Shielded case
- Aqueous washable

Applications

- CDMA
- Cellular Infrastructure
- Wireless communications
- Receivers / Transmitters



CASE STYLE: HZ1198
PRICE: \$9.35 ea. QTY (1-9)

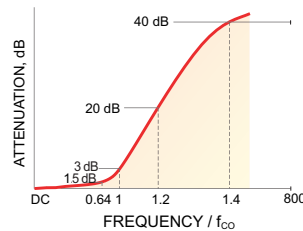
+ RoHS compliant in accordance with EU Directive (2002/95/EC)

The +Suffix has been added in order to identify RoHS Compliance. See our web site for RoHS Compliance methodologies and qualifications.

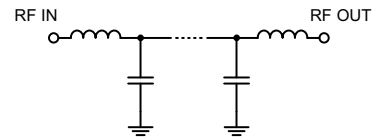
Low Pass Filter Electrical Specifications (T_{AMB} = 25°C)

PASSBAND (MHz)	f _{co} , MHz Nom.	STOPBAND (MHz)		VSWR (:1)	
		(Loss > 20dB)	(Loss > 40dB)	Passband Typ.	Stopband Typ.
DC - 0.8	1.25	1.55 - 1.75	1.75 - 1000	1.1	20

Typical Frequency Response

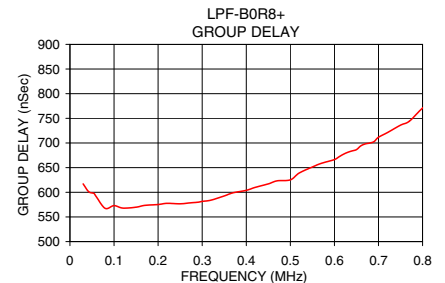
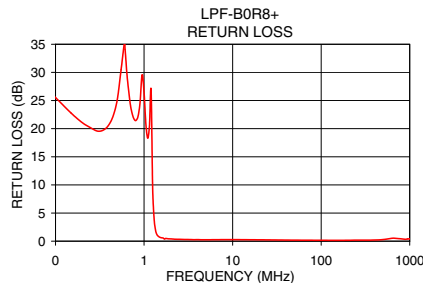
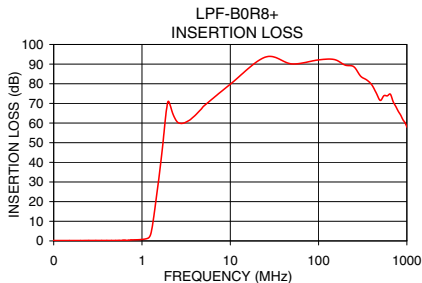


Functional Schematic



Typical Performance Data at 25°C

Frequency (MHz)	Insertion Loss (dB)		Return Loss (dB)	Frequency (MHz)	Group Delay (nSec.)
	\bar{x}	σ			
0.03	0.16	0.02	32.59	0.03	616.97
0.30	0.24	0.01	19.55	0.04	603.62
0.63	0.29	0.02	31.18	0.05	598.63
0.80	0.52	0.02	21.42	0.06	590.63
1.10	1.04	0.03	18.29	0.08	567.48
1.20	1.74	0.22	26.89	0.10	572.98
1.25	3.19	0.55	9.57	0.15	569.80
1.30	6.62	0.83	3.92	0.20	575.21
1.35	11.38	0.95	1.86	0.25	576.60
1.45	21.66	0.96	0.87	0.30	581.55
1.55	31.62	1.00	0.63	0.35	592.62
1.75	52.28	1.65	0.48	0.40	604.02
4.00	63.88	0.53	0.28	0.50	625.22
10.00	79.78	1.22	0.28	0.55	651.29
100.00	92.14	4.30	0.16	0.60	666.34
500.00	71.51	1.78	0.29	0.63	680.95
800.00	66.00	1.68	0.42	0.70	711.58
1000.00	58.19	1.61	0.40	0.80	770.79



Mini-Circuits®
ISO 9001 ISO 14001 CERTIFIED

ALL NEW
minicircuits.com

P.O. Box 350166, Brooklyn, New York 11235-0003 (718) 934-4500 Fax (718) 332-4661 For detailed performance specs & shopping online see Mini-Circuits web site



The Design Engineers Search Engine Provides ACTUAL Data Instantly From MINI-CIRCUITS At: www.minicircuits.com

RF/IF MICROWAVE COMPONENTS

REV. OR
M119635
EDR-8834/3AUF1
LPF-B0R8+
URJ/RAV
080919
Page 1 of 1