

Ceramic Low Pass Filter

50Ω DC to 850 MHz

LFCN-900+ LFCN-900



Maximum Ratings

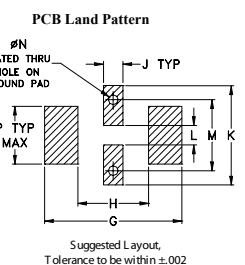
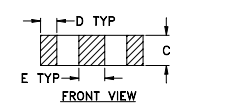
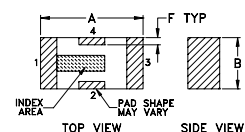
Operating Temperature	-55°C to 100°C
Storage Temperature	-55°C to 100°C
RF Power Input*	10W max. at 25°C

* Passband rating, derate linearly to 3.5W at 100°C ambient. Permanent damage may occur if any of these limits are exceeded.

Pin Connections

RF IN	1
RF OUT	3
GROUND	2,4

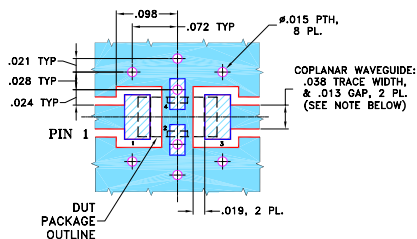
Outline Drawing



Outline Dimensions (inch)

A	B	C	D	E	F	G	H	J	K	L	M	N	P	wt
.126	.063	.037	.020	.032	.009	.169	.087	.024	.122	.024	.087	.012	.071	grams
3.20	1.60	0.94	0.51	0.81	0.23	4.29	2.21	0.61	3.10	0.61	2.21	0.30	1.80	.020

Demo Board MCL P/N: TB-270 Suggested PCB Layout (PL-137)



- NOTES:
- COPLANAR WAVEGUIDE PARAMETERS ARE SHOWN FOR ROGERS RO4350B WITH THICKNESS .020" ± .0015". COPPER: 1/2 OZ. EACH SIDE. FOR OTHER MATERIALS TRACE WIDTH & GAP MAY NEED TO BE MODIFIED.
 - BOTTOM SIDE OF THE PCB IS CONTINUOUS GROUND PLANE. DENOTES PCB COPPER LAYOUT WITH SMOBC (SOLDER MASK OVER BARE COPPER) DENOTES COPPER LAND PATTERN FREE OF SOLDER MASK

Features

- excellent power handling, 10W
- small size
- 7 sections
- temperature stable
- rejection in stopband, 45-50 dB typ.
- protected by U.S Patent 6,943,646

Applications

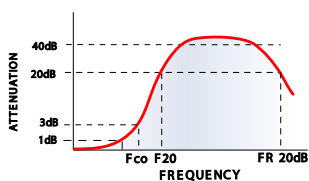
- harmonic rejection
- VHF/UHF transmitters/receivers
- lab use

Electrical Specifications¹ (T_{AMB} = 25°C)

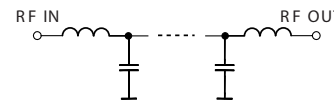
PASSBAND (MHz)	f _{co} , MHz Nom.	STOP BAND (MHz) (loss, dB)			VSWR (:1)		NO. OF SECTIONS
		F 20	30	FR 20	Stopband	Passband	
(loss < 1.3 dB)	(loss 3 dB)	Min.	Typ.	Typ.	Typ.	Typ.	
DC-850	1075	1275	1350-4850	5100	20	1.2	7

1. For applications requiring DC voltage to be applied to the Input or output, use LFCN-900D+ (DC Resistance to ground is 100 Mohms min.)

typical frequency response

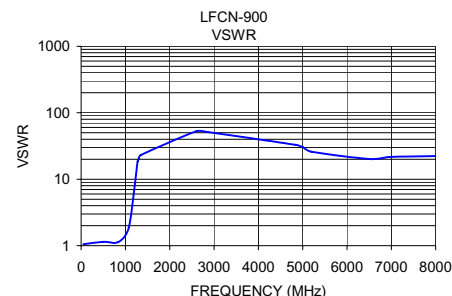
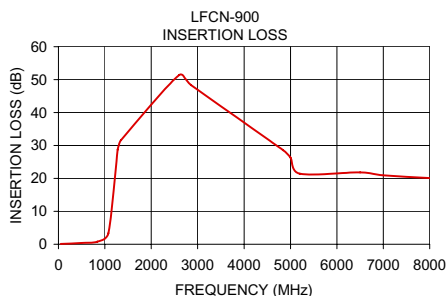


electrical schematic



Typical Performance Data at 25°C

Frequency (MHz)	Insertion Loss (dB)	VSWR (:1)
50.00	0.10	1.05
500.00	0.38	1.14
840.00	0.81	1.14
1075.00	3.36	1.88
1275.00	28.73	18.50
1300.00	29.98	20.22
1350.00	31.63	23.18
2600.00	51.39	52.65
2860.00	48.32	51.10
4840.00	28.59	32.79
5000.00	26.32	30.49
5200.00	21.44	25.94
6500.00	21.81	20.22
7000.00	20.93	21.73
8000.00	20.09	22.29



Mini-Circuits
ISO 9001 ISO 14001 AS 9100 CERTIFIED

minicircuits.com

P.O. Box 350166, Brooklyn, New York 11235-0003 (718) 934-4500 Fax (718) 332-4661 For detailed performance specs & shopping online see Mini-Circuits web site



The Design Engineers Search Engine Provides ACTUAL Data Instantly From MINI-CIRCUITS At: www.minicircuits.com

IF/RF MICROWAVE COMPONENTS

REV. H
M121640
LFCN-900
EDR-9469/1
RVN/AD/CP/AM
090218