

# Ceramic High Pass Filter

## HFTC-26+

50Ω 3000 to 7000 MHz



### Maximum Ratings

Operating Temperature	-55°C to 100°C
Storage Temperature	-55°C to 125°C

Permanent damage may occur if any of these limits are exceeded.

### Pin Connections

RF IN	2
RF OUT	5
GROUND	1,3,4,6

### Features

- miniature size, 0.15"X0.15"
- low profile, 0.028" height
- low pass-band insertion loss, 1.0 dB typ.
- excellent input power handling, 10W
- hermetically sealed

CASE STYLE: FR933  
PRICE: \$3.75 ea. QTY. (10-49)

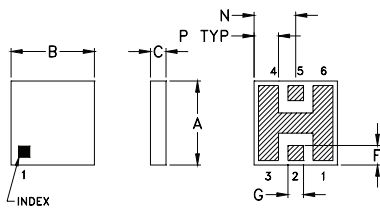
**+ RoHS compliant in accordance with EU Directive (2002/95/EC)**

The +Suffix has been added in order to identify RoHS Compliance. See our web site for RoHS Compliance methodologies and qualifications.

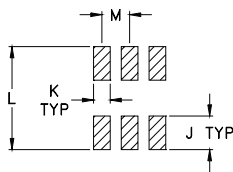
### Applications

- sub-harmonic rejection
- transmitters/receivers
- dc blocking

### Outline Drawing



### PCB Land Pattern

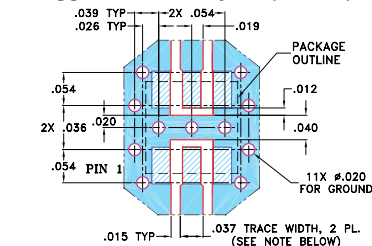


Suggested Layout,  
Tolerance to be within ±0.02

### Outline Dimensions (inch/mm)

A	B	C	D	E	F	G	H
.150	.150	.028	--	--	.035	.028	--
3.81	3.81	0.71	--	--	0.89	0.71	--
J	K	L	M	N	P		wt
.060	.030	.184	.050	.075	.044		grams
1.52	0.76	4.67	1.27	1.91	1.12		0.15

### Demo Board MCL P/N: TB-233 Suggested PCB Layout (PL-112)



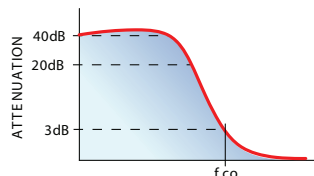
- NOTES: 1. TRACE WIDTH IS SHOWN FOR ROGERS RO4350B WITH DIELECTRIC THICKNESS 0.020" ± 0.0015"; COPPER: 1/2 OZ. EACH SIDE. FOR OTHER MATERIALS TRACE WIDTH MAY NEED TO BE MODIFIED.  
2. BOTTOM SIDE OF THE PCB IS CONTINUOUS GROUND PLANE.  
■ DENOTES PCB COPPER LAYOUT WITH SMOBC (SOLDER MASK OVER BARE COPPER)  
■ DENOTES COPPER LAND PATTERN FREE OF SOLDER MASK

### Electrical Specifications (T<sub>AMB</sub>=25°C)

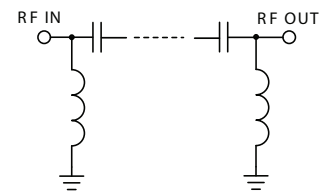
STOP BAND (MHz)	f <sub>co</sub> , MHz Nom.	PASSBAND (MHz)	VSWR (:1)	POWER INPUT* (W)	MARKING	NO. OF SECTIONS
(loss > 40 dB)	(loss 3 dB)	(loss < 1.3 dB)	Stopband Passband			
DC-1450	Typ.	Typ.	Typ. Typ.			
2000	2570	3000-7000	18 1.5	10	HF11	7

\* Derate linearly to 4W at 100°C ambient.

### typical frequency response

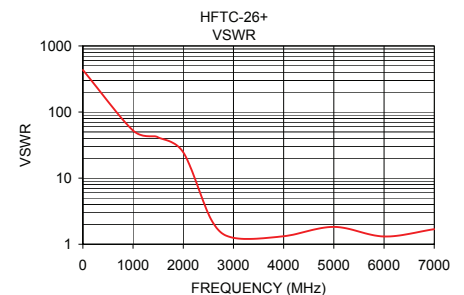
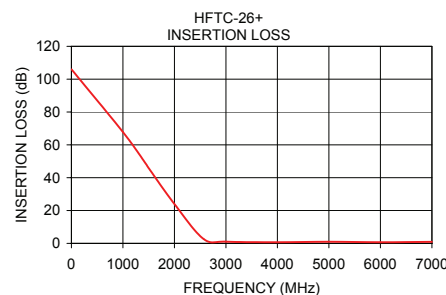


### electrical schematic



### Typical Performance Data at 25°C

Frequency (MHz)	Insertion Loss (dB)	VSWR (:1)
1.00	105.97	432.30
1000.00	67.80	52.62
1450.00	48.22	42.68
1500.00	45.84	41.34
2000.00	23.99	24.50
2570.00	2.59	2.26
3000.00	1.02	1.25
4000.00	0.71	1.32
5000.00	0.99	1.83
6000.00	0.70	1.31
7000.00	0.94	1.69



**Mini-Circuits®**  
ISO 9001 ISO 14001 AS 9100 CERTIFIED

**minicircuits.com**

P.O. Box 350166, Brooklyn, New York 11235-0003 (718) 934-4500 Fax (718) 332-4661 For detailed performance specs & shopping online see Mini-Circuits web site

**The Design Engineers Search Engine** Provides ACTUAL Data Instantly From MINI-CIRCUITS At: [www.minicircuits.com](http://www.minicircuits.com)

I/F/RF MICROWAVE COMPONENTS

REV. H  
M121640  
HFTC-26+  
EDB-020615  
WZ/RS/CP/AM  
080219